

Full height faceted glazed
Komfire 75 with integral blinds

Komfire 75



Head Office and Essex 020 8500 9888
email info@capitalofficepartitioning.co.uk

Komfire 75/100 Brochure



Komfort partitioning product comparison chart can be
found on the inside back cover of this brochure

supreme

Full height glazed Komfire 75 incorporating
integral blinds, doorframes, veneered doors
and porthole vision panels








Komfire 75



Full height solid Komfire 75 incorporating full height pre-assembled windows and veneered doors

Komfire 75

Komfire 75 is a 75mm square edge trim system in a steel stud and plasterboard construction with pre-assembled window frames

Technical spec at a glance	
	DIMENSIONS: Up to 4300mm (Solid)
	FIRE RATINGS: Up to 30/0
	ACOUSTICS: Solid - up to 43dB (Rw) Double Glazed - up to 41dB (Rw)
	STRUCTURE: Up to medium duty
	WEIGHT Per m² (kg): Solid up to 24.47 Glazed up to 39.04
	BLINDS: Yes - integral
	MANIFESTATION: Yes

Detailed Komfire 75 drawings can be found on pages 32-33. In addition a partitioning product comparison chart can be found on the inside back cover of this brochure.

For further technical specifications and technical drawing downloads go to - www.komfort.com

Full height glazed and solid Komfire 75
with bespoke manifestation



Durable and simple to maintain and install,
Komfire 75 sets the standards of partition
form and function. That is why it is the UK's
most popular partitioning system.

Komfire 75



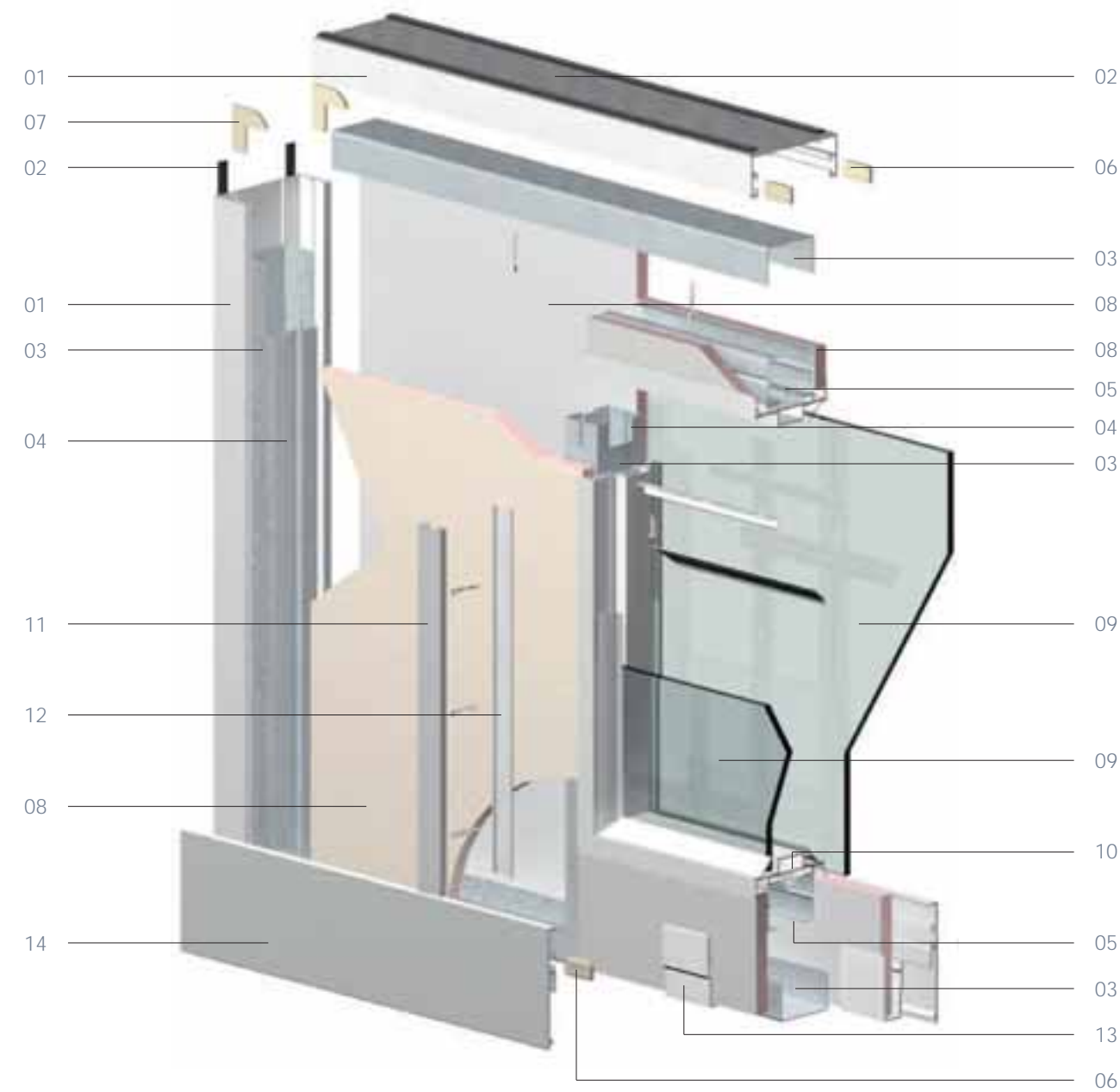
Glazed Komfire 75 incorporating
integral blinds and veneered door
with Part M compliant vision panel



Full height solid Komfire 75
with standard height glazing
and doors



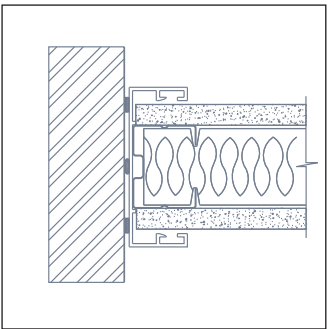
Full height solid and glazed
Komfire 75 incorporating
banded manifestation with
standard height veneered doors



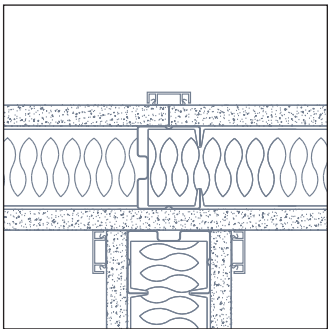
Komfire 75 - 75mm single skin partitioning system

- | | |
|----------------------------|-------------------------------|
| 01 Head /abutment channel | 09 6mm / 6.4mm safety glass |
| 02 Abutment seal | 10 Pre-assembled window frame |
| 03 Steel head / base track | 11 Cover trim |
| 04 Steel vertical stud | 12 Steel batten |
| 05 Steel stud transom | 13 Skirting clip |
| 06 Straight jointing cleat | 14 100mm skirting |
| 07 90° jointing cleat | |
| 08 12.5mm plasterboard | |

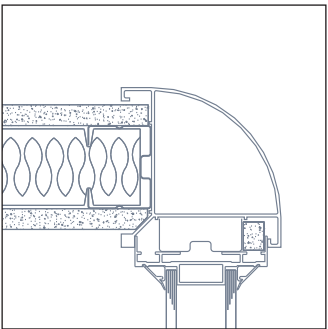
Note: For clarity the cavity infill has not been shown



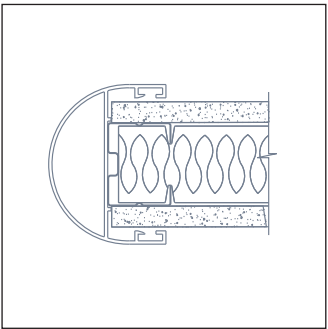
Solid abutment



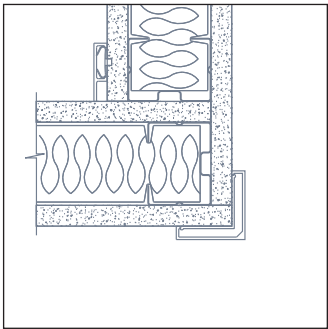
3 way solid junction



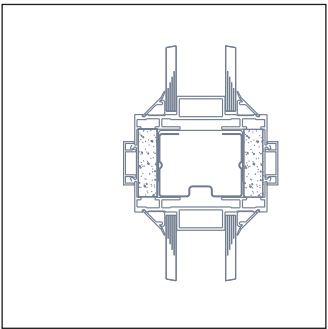
90° solid to glazed junction



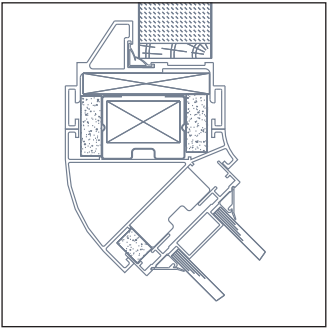
Solid fair end



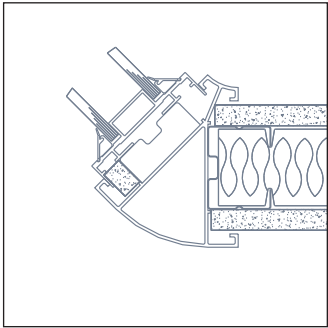
90° solid to solid junction



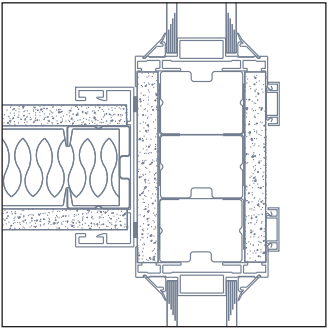
Glazed to glazed junction



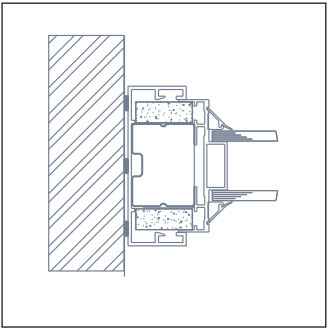
135° glazed to doorset junction



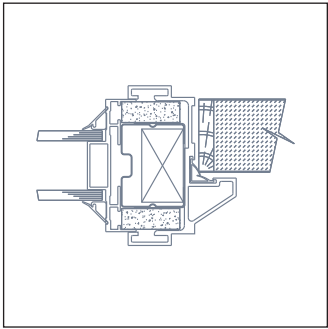
135° solid to glazed junction



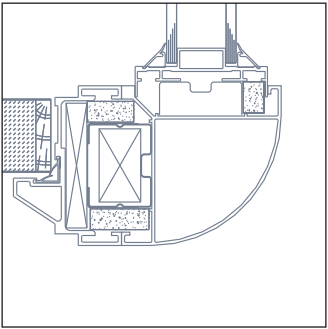
3 way glazed to solid to glazed junction



Glazed abutment



Glazed to doorset junction



90° glazed to doorset junction

Full height solid and glazed Komfire 100 incorporating integral blinds, full height doorframes with standard height veneered door and rebated veneered overpanel

Komfire 100



Komfort partitioning product comparison chart can be found on the inside back cover of this brochure

resolute

Full height solid and glazed Komfire 100 incorporating integral blinds and veneered doors with rectangular vision panel and stainless steel kick plates

Komfire 100




Full height solid and glazed Komfire 100 incorporating integral blinds to the glazed sections


Komfire 100


Komfire 100 is a 100mm double skinned square edge trim system in a steel stud and plasterboard construction with pre-assembled window frames


Technical spec at a glance


 **DIMENSIONS:**
Up to 4800mm high (solid double skin)

 **FIRE RATINGS:**
Up to 60/60

 **ACOUSTICS:**
Solid - up to 52dB (Rw)
Double Glazed - up to 41dB (Rw)

 **STRUCTURE:**
Up to severe duty

 **WEIGHT Per m² (kg):**
Solid up to 46.08
Glazed up to 39.04

 **BLINDS:**
Yes - integral

 **MANIFESTATION:**
Yes

Detailed Komfire 100 drawings can be found on pages 42-43. In addition a partitioning product comparison chart can be found on the inside back cover of this brochure.

For further technical specifications and technical drawing downloads go to - www.komfort.com

Full height curved, solid Komfire 100



Komfire 100 is renowned for its impressive set of performance credentials and application possibilities. One partition with countless possibilities.

In spite of its incredible performance qualities, Komfire 100+, a double skinned variation can create an ambience that is inviting and appealing. It is the perfect choice for buildings where stringent fire regulations apply.

Komfire 100



Full height curved solid Komfire 100



Full height solid and glazed Komfire 100 incorporating veneered doors



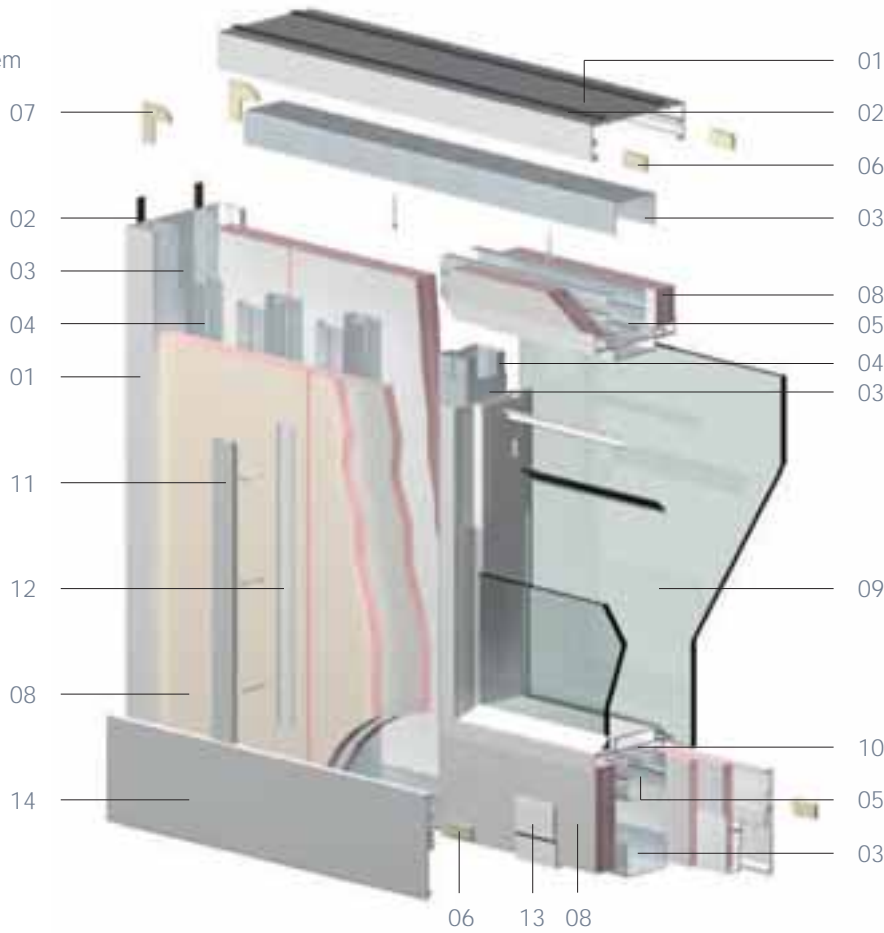
Curved Komfire 100

Komfire 100

100mm double skin partitioning system

- 01 Head / abutment channel
- 02 Abutment seal
- 03 Steel head / base track
- 04 Steel vertical stud
- 05 Steel stud transom
- 06 Straight jointing cleat
- 07 90° jointing cleat
- 08 12.5mm plasterboard
- 09 6mm/6.4mm safety glass or fire glass
- 10 Pre-assembled window frame
- 11 Cover trim
- 12 Steel batten
- 13 Skirting clip
- 14 100mm skirting

Note: For clarity the cavity infill has not been shown

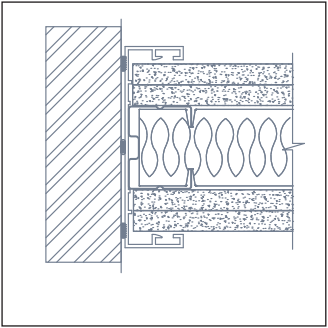
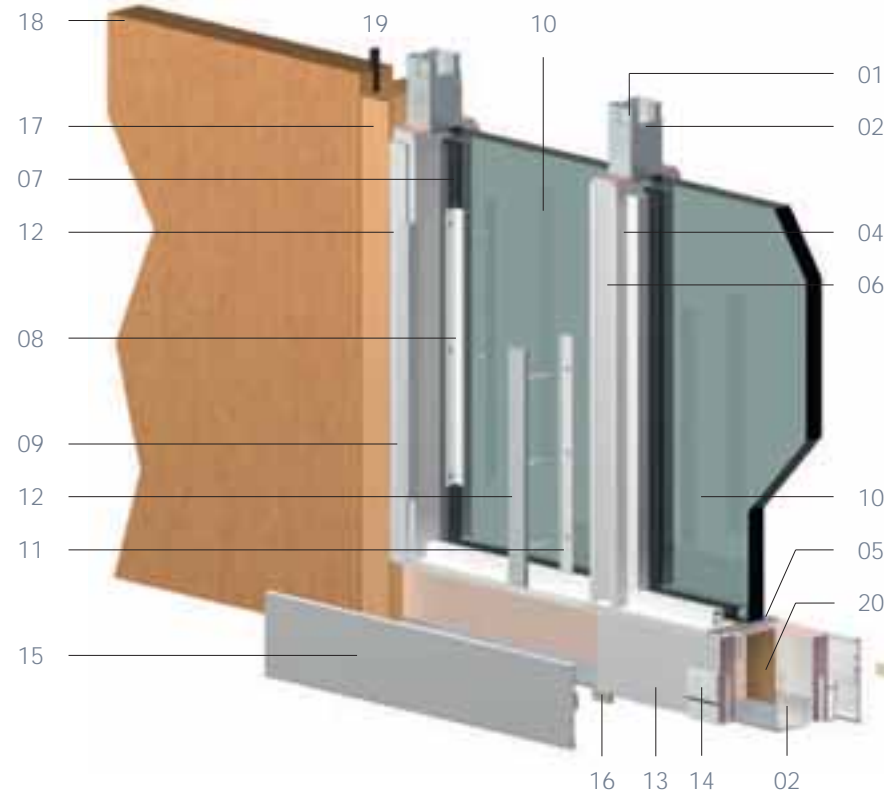


Komfire 100+

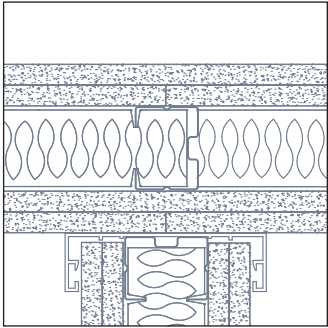
100mm double skin partitioning system
& 60 minute glazed

- 01 Steel vertical stud
- 02 Steel head / base track
- 03 Steel stud transom
- 04 Aluminium window liner
- 05 Steel window liner
- 06 Pre-cut plasterboard strips
- 07 Foam seal
- 08 Steel glazing bead
- 09 Aluminium glazing trim
- 10 Glass up to 60 / 60 minute fire performance
- 11 Steel batten
- 12 Cover trim
- 13 12.5mm plasterboard
- 14 Skirting clip
- 15 100mm skirting
- 16 Straight jointing cleat
- 17 Timber door frame
- 18 FD60 door
- 19 Intumescent fire seal
- 20 Flaxcore strip ground

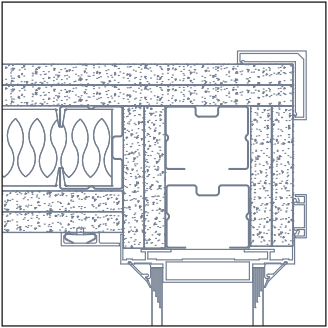
For Komfire 100+ junction drawings please contact our technical department



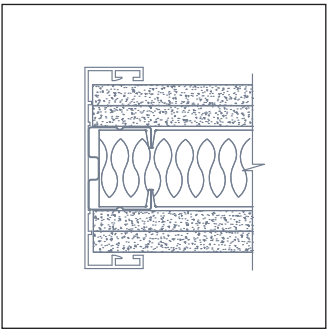
Solid abutment



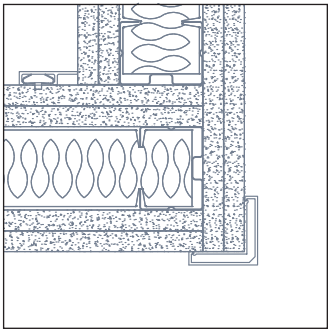
3 way solid junction



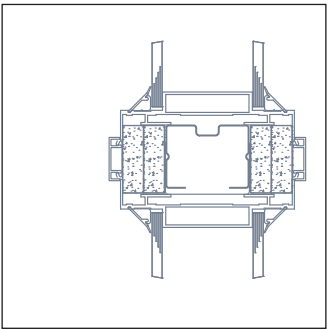
90° solid to glazed junction



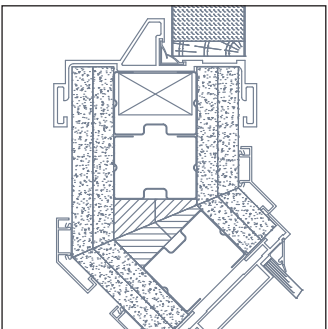
Solid fair end



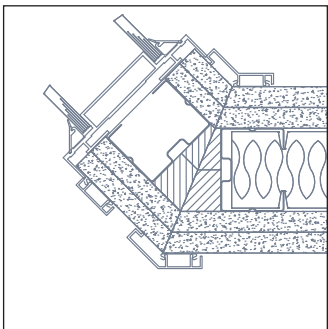
90° solid to solid junction



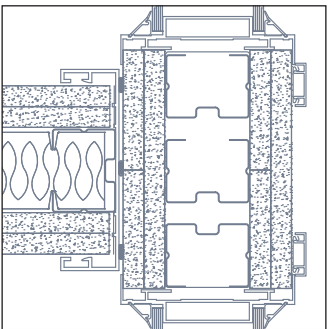
Glazed to glazed junction



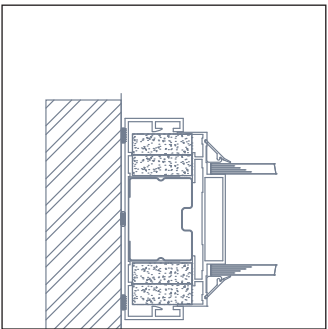
135° glazed to doorset junction



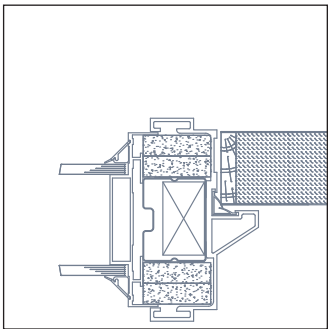
135° solid to glazed junction



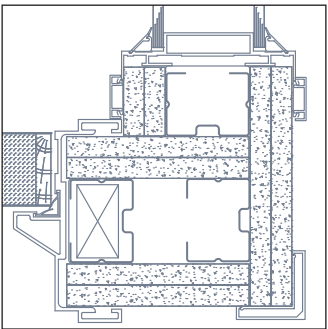
3 way glazed to solid to glazed junction



Glazed abutment



Glazed to doorset junction



90° glazed to doorset junction